

# BOOK STUDY CLUB


Book Study will be starting the week of July 22nd! We are looking for participants, hosts, and what days work best for people!



We will read "Searching for Sunday" by Rachel Held Evans. It will challenge you spiritually and make you ask questions – and admit to some of your pre-existing questions – but anyone can understand and digest the content. It should take 7 weeks to finish, with a meeting each week to discuss what we read!

*If you are interested, please e-mail Pastor Rob ([gracepastor@gpcfw.org](mailto:gracepastor@gpcfw.org)) with something about Book Study in the subject line.  
More details to come as we get closer!*

## MISCELLANEOUS

- \* Just a friendly reminder that per capita is due. **The cost is \$40.71** 
- \* *United Faith needs volunteers to help in the food bank on Monday & Wednesdays from 9:00am - 11:00am. **\*\*If interested, contact Judy at (260) 438-0915 or (260) 424-5610\*\****
- \* This year Fishes and Loaves collected \$70 plus cans of fish and boxes of crackers that was delivered to United Faith Food Bank. Also, we collected \$111.00 from the Lenten coin folders which will help Wellspring and One Great Hour of Sharing received \$430.00 which will go to Presbytery.

## GRACE NOTES



### The Newsletter for Grace Presbyterian Church

Volume 19, Issue 3:  
June – July, 2019

~~~~~  
Sunday School:  
9:00 A.M.  
Worship:  
10:30 A.M.  
Fellowship:  
11:30 A.M.

~~~~~  
Office Hours:  
Monday-Friday  
10:00 A.M.-2:00 P.M.

~~~~~  
Pastor:  
Rev. Robert Brown  
[gracepastor@gpcfw.org](mailto:gracepastor@gpcfw.org)  
Cell: (260) 267-5367

~~~~~  
Administrative Assistant:  
Holly Sides  
[graceoffice@gpcfw.org](mailto:graceoffice@gpcfw.org)  
Office: (260) 426-4712



### What does it mean to be a "Neighborhood Church"?

In my interviews with the PNC and our conversations when I visited, Grace people believe that Grace is a "Neighborhood Church." I have heard stories about the neighborhood of the past, how people grew up here and started lives here. We claim ourselves as a part of the neighborhood.

But, are we? I want you, Grace family, to think about that question. Are we part of the neighborhood, or just happen to have a building in the neighborhood? Are we part of the life of North Highlands and the wider 46808 zip code, or do we just travel in?

Convicting questions tend lead to one answer, I know, but I see people laying paths and inroads to help with walk with our neighborhood and live as part of the neighborhood. Congregational Life and M.O.E. have started looking for ways to just fellowship with our neighbors here, and I want to encourage the wider Grace family to do the same.

For the few that actually live close, what opportunities do you see for Grace to join, partner, and walk with our neighbors? For everyone else, will you joyfully come to the neighborhood – regularly beyond Sunday and Bible Study – to live as part of this area and not just a visitor to a building twice a week?

I want Grace to be a neighborhood church, and I think this area needs relationship with church. We have opportunity here to live out the second greatest commandment – "Love your neighbor as yourself" – if we just listen and live it out.

Peace,  
Pastor Rob

## HEARTS AND TREASURES

In his Sermon on the Mount, Jesus told his disciples and listeners, "Where your treasure is, there your heart will be also" (Matthew 6:21). One line in the lyrics of blues singer Bonnie Raitt's recording "I Can't Make You Love Me" tells us, "You can't make your heart feel something it won't". Believe it or not, both of these ideas relate to the stewardship of the financial resources we receive from God.

We know that giving back to God is an act of worship since it's a part of most Christian worship services. And we know that it's also an expression of our faith. But the Bible also presents giving as a *spiritual discipline*, and recognition of what it says in this regard is central to an understanding of biblical stewardship as "good news." Christian churches of all denominations teach that there are certain practices that we can do regularly to maintain our spiritual health. There is a lot of variety among different sects and denominations, but also a good deal of overlap. Almost all churches would recommend that their members practice some routine of Bible reading or of personal or family devotions. But, of all the spiritual disciplines that are presented in the Bible (and in the teachings of various churches), giving to God is special in that it is the most directly connected to the status and condition of our hearts.

When we read that Jesus said, "Where your treasure is, there your heart will be also", we probably think he meant, "People put their treasures (their money) where their hearts are." As if how much they spend on family, entertainment, travel, church reveals where their priorities (hearts) are. But that's not really what Jesus said. He didn't say, "Where your *heart* is, there your *treasure* will be." Jesus said it the other way around: "where you put your treasure—that's where your heart will end up." The point isn't that how we spend our money *reveals* what sort of people we *are*, but that how we spend our money *determines* what sort of people we *become*. It is sometimes easier to *act* oneself into a new way of thinking than to *think* oneself into a new way of acting. We can control what happens to our hearts. We can do so in a very practical way, by deciding what sort of people we want to be, and then giving our treasure—our time, our talents, and our money—to those things that we want to care about.

This is actually very good news! What it means, in essence, is that Bonnie's song isn't true. We *can* make our hearts feel what they don't. "Give from the heart!" people say. But Jesus seemed to speak of something else: Give where you want your heart to be, and let your heart catch up. Don't just give to things you care about. Give to things you *want* to care about. Don't decide the amount of your giving by how much you care, but by how much you *want* to care.

**Adapted from *Giving to God: The Bible's Good News about Living a Generous Life*  
by Mark Alan Powell, 2006, Eerdmans Publishing**

# STEWARDSHIP ARTICLE

## PRESBYTERIAN WOMEN

### Cancer Pad Sewing

Grace Mission Project and good fellowship. No special sewing skills needed. Just a simple basting stitch. We meet the 3rd Wednesday of the month at 9am.

June 19 & July 17 @ 9:00am in the Gold Room.

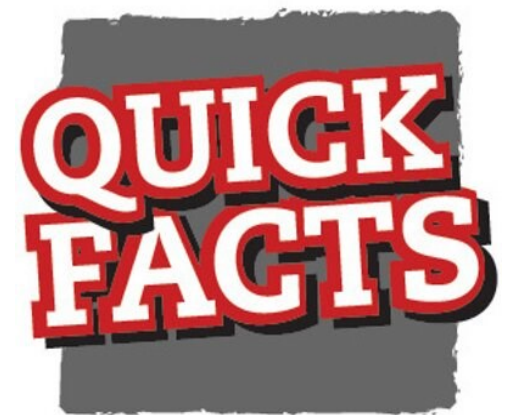
### Lunch Bunch

Come have lunch at Glenbrook Mall Food Court near JC Penny's on the last Thursday of the month at 12 noon - June 27 & July 25 at 12:00pm

**\*\* Sarah Circle will not be meeting June — August \*\***

## PENTECOST *Special Offerings*

- \* Pentecost is represented with the color red, which symbolizes the fire of the Holy Spirit.
- \* The Day of Pentecost is referred to as the birthday of the Church.
- \* The first Presbyterian Youth Triennium was held in 1980.
- \* Congregation keeps 40% of raised funds to initiate or support programs for young people in their communities.







# GARAGE SALE / HOTDOG GIVE-A-WAY

## FUN



Garage  
SALE



## GRATITUDE NOTES

"I would like to thank everyone who donated sheets and pillowcases for cancer pad sewing. Your generosity is greatly appreciated and your donations allow us to continue this worthy cause."

– Evelyn Brunnegraff

"The children and youth Sunday school classes would like to thank everyone for their generous donations supporting their Heifer international gift."

Through those donations, and the weekly offerings of the students, they have decided to purchase a goat and two baskets of animals that include ducklings, goslings, & rabbits. These gifts will be provided to families in need. In addition to the gifts, the families will be provided with training on how to raise the animals and achieve a sustainable livelihood."

– Cathy German

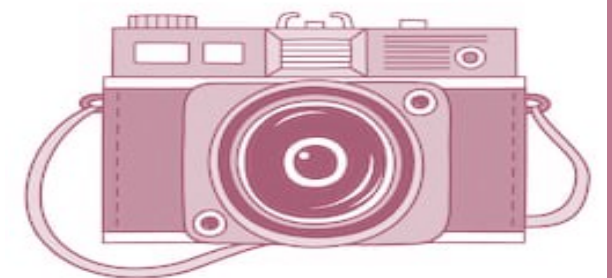
## AROUND GRACE

### "So You've Died, Now What?" Workshop



Mommy, Pam  
Callahan, &  
Baby Cate  
exercising with  
3B

JUST SAY  
CHEESE



### Easter Egg Hunt Fun





# CONGREGATIONAL LIFE



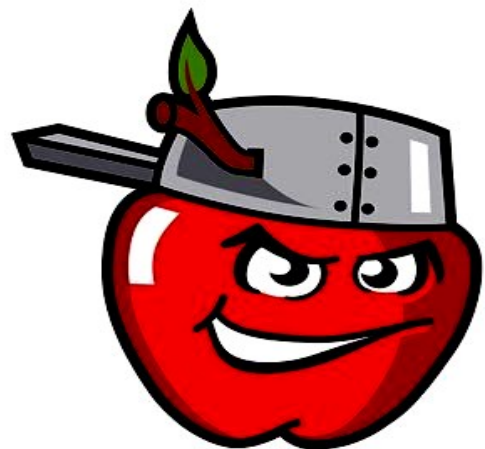
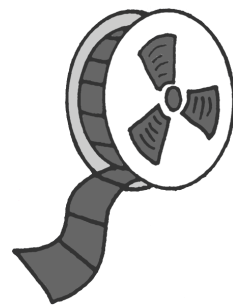
**June 7<sup>th</sup> is Game Night!** Bring your favorite game and dessert to share! Sandwiches and snacks will be provided. *A bonfire with S'mores will begin at 8:00pm*



**June 25th is the ICE-CREAM SOCIAL!**  
*Look for details in the future bulletins!*



**August 23rd will be "Make Your Own Pizza & Movie Night!"**  
*Look for details in the future bulletins!*



**Would you be interested in going to a Tin Caps Baseball Game?!** We would go on either a Friday night or Sunday afternoon sometime at the end of July or beginning of August.  
**If you'd be interested in going to a ball game, please let the office know.**

# BIRTHDAYS & ANNIVERSARIES

## BIRTHDAYS

Bill Graney - June 5  
Kara Polk - June 6  
Renee Lyons - June 6  
Tyler Bowers - June 27  
Bob Guingrich - June 28  
Stacey Monnier - June 28  
Evelyn Brunnegraff - July 1  
Avery Marshall - July 1  
Dennis Allen - July 6

Albert Bragalone - July 8  
Bob Gilbert - July 8  
Jennifer Mahoney - July 8  
Bonnie Geist - July 10  
Laura Fuller - July 11  
Carol Macy - July 13  
Katelyn Monnier - July 13  
Teri Seitz - July 17  
Cindy Bowers - July 22  
Delaney Seitz - July 24

*Please consider donating to the Legacy Birthday Fund. The Legacy Fund is an investment fund providing for the future of Grace. It will use the interest earned to promote special projects in areas of missions, property, and programs. If you'd like to donate, the decorated birthday box is in the Narthex.*



## ANNIVERSARIES

Dennis & Sharon Allen - June 13  
Bob & Ann Bausser - June 17  
Al & Sue Creager - June 27  
Richard & Tamara Jenkins - July 8  
Tim & Alice Bauman - July 9  
Brian & Carrie Geist - July 12  
Bill & Kathy Graney - July 29